



DISCOVER YOUR INNERSELF AT



Formerly known as Shankeshwar Builders

First of its kind. Pyramid Meditation Center

spiritual city

Just ₹ 2100/- per month and
easy part payment



About Svamitva Group

We, the Svamitva Group, a flagship company of Shankeshwar Builder, are dedicated to the cause of matching our valuable clients to their perfectly-suited residences or business suites. Comfort, serenity, safety, utility, access, impeccable service and custom-made creations are just a few tenets of each of our ventures. We excel at conceptualizing, creating and providing real estate and property tailor-made for the needs and aspirations of the 21st century. Sun world city, Surya lake view, Silver Oak City and Shri Aishwarya Nagar, Sonata City, Signature City are a few among our satisfying achievements in the real estate industry in Vijayapura.

Real Estate business has never before achieved the harmonious mix of professional and personal that we at Svamitva Group have made our trademark. From construction to urban development and regeneration, from commercial and business estates to private residences and housing complexes, Svamitva Group weaves into projects its magical combination of state of the art technology, austerity and tradition.





About Spiritual City

Svमितva Group presents another historic project Spiritual City. First time in the history of Vijayapura a project comes with perfect combination of Ancient and Modern concepts. Svमितva presents Spiritual City which is a farm house home in a city. It has all amenities which you can enjoy in your farm house. It has a unique concept where in health benefit of our customer is taken in to consideration. So first time in history of Vijayapura a Pyramid Meditation Centre has become reality at Spiritual City. This is Hurd Pyramid in Karnataka after Bangalore.

So you will enjoy perfectly landscaped garden from landscape architect who has worked with real estate in Bangalore.

Greeneries and Lavish Amenities

- ❖ Grand Entrance Gate
- ❖ Pyramid Meditation center
- ❖ Club House with Gym
- ❖ Joggers Park
- ❖ Children's Play Area
- ❖ Volleyball Court
- ❖ All above all this its gives you best return on investment.

Spiritual City at Glance :

Spiritual City near to Karnataka Women's University

Spiritual City close to Al-Ameen Medical College

Spiritual City close to Sainik School

Spiritual City near to Civil Hospital

Spiritual City close to Kendriya Vidyalaya

The Innovative Project is inaugurated by the Legendary Sandalwood Actor Mr. Upendra in presence of thousands of aspirants and well wishers gathered in this event

Pyramid Meditation Center

We Svamitva Group believes in healthy leaving for our customers. At Spiritual City you automatically get access to world of Pyramid which is a unique experience and has proven health benefits from ancient age's. First time in history of Vijayapura a Pyramid is conceptualized. Meditation done inside a pyramid, or underneath a pyramid, is called as Pyramid Meditation. Pyramids provide a high energy meditation environment Meditation done inside a pyramid is three times more powerful and effective due to cosmic energy.

Many people experience calmness and total relaxation of body and shutting out of irrelevant thoughts faster during pyramid meditation.

Meditation is total calming of all restless waves of the mind. The mind is the separator of the physical energy and the cosmic energy. A mind full of unnecessary and incessant thoughts acts as barrier and doesn't allow cosmic energy to enter into the body system.

Observation of our Natural breathing leads to thoughtless state of the mind and makes it empty. When the mind is empty, cosmic energy starts flowing into the body,





Pyramid Power

Pyramids, being geometric structures, are storehouses of energy drawn from the universe. Ancient Egyptians utilized the concept when they built the pyramids 10,000 Years ago. The power of the pyramid was obtained through a blending of the radiated cosmic energy with that of the gravitational force of earth. Several experiments conducted in the man-made pyramids have revealed generalized pyramid powers including preservation, healing and out-of-body experiences.

Healing

Exposure to Pyramid energy for a few minutes a day has an everlasting positive effect on the health front. This is because Pyramids generate negative ions which have a positive influence on our bodies. Ions are atoms with an extra electron or a less electron. Ions reproduce and repair body cells. They are transmitted into the body through the air and are circulated by the blood. For example, if one is exposed to too much pollution, one feels sick or gets nausea. This is the effect of positive ions. In contrast, one feels different after a heavy rainfall or while sitting near a waterfall. This is due to the effect of more negative ions in the air. Since Pyramids can generate negative ions, they have a balancing effect on the electromagnetic field of the body and we are able to achieve calm state of mind or nothingness, which is huge rocket sign in the path of spiritual progression

Dreams become clearer & they take the quality of normal working state. Increases resistance to diseases; gives relief to and cures common ailments such as asthma, toothaches, migraine, cold, high B.P, arthritis, palpitation of heart, epilepsy, insomnia, helps digestion, reduces tension, makes skin healthy and youthful.



Amenities

At Svamitva, we firmly believe in wholeness and togetherness. Accordingly, we shape landscapes to be completely incorporative of all that our clients would require, would need, would desire and dream of for their ideal habitation environment. The safe and serene expanse of this project has a sturdy, well-thought out entrance gate and generously spaced out units. We are working with Renowned landscape designers and architects from Pune and Bangalore.



Pyramid Meditation Center



Entrance Gate



Multipurpose Hall



Gym



Regal and princely that's what life at spiritual city promise to be! Along with the perfect site for your perfect home. A club house with a party hall where you can celebrate all those special moments of your life. A modern gym will keep you fit and healthy. A kids playing area for your little princess and prince. Lovely landscaped Area with lush green palms to keep you close to nature.



Volleyball Court



Cycle Zone



Children Play Area



Jogging Track



Nana Nani Park



Landscaped Garden







Best lucky customers

A small gesture of our appreciation (and an act of giving back more to our clients – prospective and established alike) is the set of exciting gifts we have in store for you. Winning a Honda Activa, an Alto Car and Mercedes has never before come with the joy of discovering reliable, trustable and flourishing real estate!

Lucky Customers shall be selected once in 3 months, 1 year with a grand finale, valid for a period of 5 years from the date of launch. They don't have to be expensive to make, and you can have a lot of fun with the contents and themes. And First lucky customers will start only after 8 months from the launch date.

T & C Apply



Honda Activa Every 3 months
for lucky customers



Alto Car Every 1 Year
for lucky customers



Mercedes Benz Car
only one lucky customer

Vijayapura Tourism

Pyramid meditation centre will be next tourism spot to be visited when you travel to Vijayapura. Capital of the Vijayapura Sultanate, this medieval city in Karnataka is known for its fort, gardens and mosques. Founded by the Chalukyas in the 11th century, Vijayapura's regal monuments attract a large number of tourists. The town was ruled by the Chalukyas from the 11th-12th century and was known as Vijayapur (or the City of Victory). Under the Bahamani Sultnate of Gulbarga, it was rechristened Vijayapura.

Its golden age was under the Adil Shah dynasty, which was founded by Yusuf Adil Shah in the 15th century. Under the rule of the sultans of this dynasty, the city saw a significant increase in architectural marvels, many of which are in a good condition even today.

The city boasts of more than 50 mosques, 20 mausoleums and many palaces reminders of the regal past. Vijayapura's monuments are a must visit during a tour of the city.

Gol Gumbaz, which has one of the largest domes in the world, Jama Masjid, the largest mosque in the region and Ibrahim Rauza has to be seen to appreciate their beauty. Other attractions are Gagan Mahal, Upri Burj, Chand Bawdi and the numerous gardens in the area. Malik-e-Maidan, the largest cannon in the world during medieval times, is a must visit too!

Vijayapura was annexed by Aurangzeb in 1686, putting an end to the Adil Shah rule. It later fell in the hands of the Marathas and subsequently went to the British.



About Vijayapura Developments

Bijapur Municipal Corporation is the newest city corporation formed under the KMC Act

Airport taken up for Development on a PPP basis at Vijayapura

National Highway 13(NH 13) PASSING THROUGH Solapur–Vijayapura Hungund – Hospet-Chitradurga is being upgraded to 4 – lane, 60 – meter wide grade separated highway

Soon double track work of Vijayapura Railway Station is going to start. In first phase between Vijayapura-Athani-Shedbal.

20000 Cr. New NTPC Plant (thermal power plant) Generating 4000MW power work started.

Suvarna Karnataka Development corridor proposes a new food zone & Power generation zone covering bijapur district

Two more industrial parks and one industrial area has been proposed. Two textile parks & food park are proposed in the district.

Vijayapura has emerged as a major attraction for tourist place after Mysore, Hampi



Steel plant - Bijapur District
Cement Factories
Bijapur District as Power Hub



Karnataka state women's university Al – Ameena
Dental College
Dr.PG. Halakatti college of Engineering and technology
SECAB College of Engineering and Technology
BLDEA's B.M.Patil Medical college



Al – Ameen medical college
Hospital Ayush Hospital
Sasnur Hospital
Ram Krishna Hospital
Ashwini Children Hospital



Karnataka Women's University

Karnataka State Women's University Vijayapura also known as KSWUB was established in August 2003 and it is the first university exclusively for women in Karnataka. It is situated in Vijayapura. Dr Meena Chandavarakar from Bagalkote is incumbent Vice-Chancellor of the University

The University offers various UG programs leading to Bachelor's degree in Arts, Business Administration, Computer Applications, Commerce, Education, Fashion Technology, Home Science, Physical Education, Science and Social Work. It also offers 20 P G Courses, P G Diploma and Certificate Courses in the Faculties of Arts, Commerce and Management, Social Sciences, Science and Technology and Education

Already in top-gear, the Karnataka State Women's University, Vijayapura by making earnest efforts had initiated its first academic session from early 2003. Having overcome the initial herculean hurdles of finding a suitable place to make a beginning, the University is all set for making its presence at Vijayapura Karnataka. This is evident from the meticulously planned details for the Jnanashakthi Campus of the University which has materialized in an area spread over 300 acres.





Our Project Information

This plotted project, spanning a breathtaking 52 acres, is located close to the Karnataka State Women's University (KSWU), Vijayapura, Karnataka. Currently, our plans for the Spiritual City envision more than 1200 incorporated units. These are a mix of 20x30, 30x40, 30x50 and other odd sites.

Spiritual City Highlights

- Located Very next to Educational Hub
- Situated next to women University
- First time we are introducing “Pyramid” Meditation Center in Vijayapura which is third in Karnataka State
- Good Return on Investment
- Spread Across 52 Acres of land
- World class amenities like Pyramid, Volleyball, Cycle zone, Children Play area, etc.,
- Heritage Inspired Entrance Plaza

Spiritual city is being developed with the vision of providing you with a home that becomes “Your Idyllic home keeping health of human being at centre of design concept for life”. This project seems to take inspiration from some well – articulated masterpiece.



Pyramid Meditation Center Spiritual City



Karnataka Women's
University



Vijayapura Road

← Tikota-Bijapur Road →

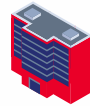
MB Patil International
School



Sainik School



Al-ameen Medical
College Hospital



Karnataka Housing
Board Colony

Vijayapura

Solapur Road

BLDE University



Gyan Yoga Ashram



Bara Kaman



Bijapur Railway
Station



Vijayapura-Sindagi Road

Gandhi Chowk
Market

Fort Bijapur



Athani Road

Shivaji Circle

Jamkhandi-Bijapur Road

M.G Road

Map is not to scale



SVAMITVA
ENGINEERING TRUST, CRAFTING SATISFACTION

Site Address - Spiritual City, Sainik Layout, Athani Road, near Women's University, Vijayapura.

Head Office - Svamitva Group #110/2 | 1st Floor | Krishnappa Layout
Lal Bagh Rd., Bangalore-560027

Vijayapur Office - Svamitva Group Formerly known as **Shankeshwar Builders**,
1st Floor, Rajguru Ashish Complex, Mahaveer road | Vijayapura

Call On

+91-8352 221075

This brochure is only conceptual Presentation of the project and not legal offering. The promoters reserve the right to make changes in the elevation, plans and specification as deemed fit.